



## New England Information Office

For Release: Friday, September 23, 2011

USDL-11-334

Technical Information: (617) 565-2327 • [BLSInfoBoston@bls.gov](mailto:BLSInfoBoston@bls.gov) • [www.bls.gov/ro1](http://www.bls.gov/ro1)

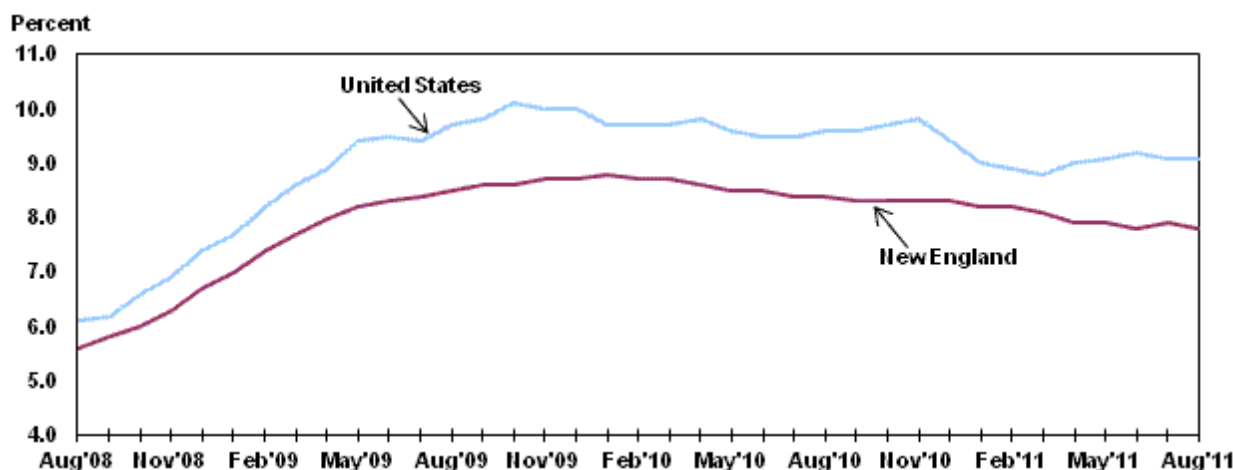
Media Contact: (617) 565-2326 • [consedine.tim@bls.gov](mailto:consedine.tim@bls.gov)

# NEW ENGLAND AND STATE UNEMPLOYMENT - AUGUST 2011 ([PDF](#))

The New England unemployment rate was essentially unchanged at 7.8 percent in August, the U.S. Bureau of Labor Statistics reported today. Regional Commissioner Denis M. McSweeney noted that the over-the-year change in New England's unemployment rate was not statistically significant. The national jobless rate was unchanged at 9.1 percent, but was 0.5 percentage point lower than a year earlier. (See chart 1.)

New England is one of nine geographic divisions nationwide. Among the nine divisions, the Pacific continued to report the highest unemployment rate, 11.2 percent in August. The West North Central again registered the lowest rate, 6.9 percent. Over the month, the East North Central was the only division to experience a statistically significant unemployment rate change (+0.2 percentage point). The East North Central also recorded the only significant rate change among divisions over the year (-0.6 percentage point).

**Chart 1. Unemployment rates for the U.S. and New England, August 2008 to August 2011, seasonally adjusted**



In August, five of the six New England states posted jobless rates that were significantly different from that of the United States. New Hampshire (5.3 percent), Vermont (5.9 percent), Massachusetts (7.4 percent), and Maine (7.6 percent) recorded lower-than-average unemployment rates and were among 25 states in the country to do so. In fact, New Hampshire reported the fourth-lowest jobless rate nationwide. In contrast, Rhode Island (10.6 percent) had the highest jobless rate among the New England states and was among eight states and the District of Columbia with rates significantly higher than the national average. Connecticut was among the 17 remaining states that registered unemployment rates that were not appreciably different from that of the nation.

In August, seven states and the District of Columbia posted statistically significant rate increases from July. The 6 New England states were among the 43 remaining states that registered jobless rates that were not measurably different from those of a month earlier, though some had changes that were at least as large numerically as the significant changes.

Over the year, five states recorded statistically significant unemployment decreases. The District of Columbia posted the only significant rate increase from a year earlier (+1.3 percentage points). The 6 New England states were among the 45 states that registered jobless rates not appreciably different from those of a year earlier.

### Technical Note

This release presents labor force and unemployment data from the Current Population Survey (CPS) and the Local Area Unemployment Statistics (LAUS) program. Estimates for the U.S. are obtained directly from the CPS, which is a sample survey of approximately 60,000 households nationwide that is conducted for the Bureau of Labor Statistics (BLS) by the Census Bureau. The LAUS program produces data for the nine geographic divisions in the United States: New England, Middle Atlantic, South Atlantic, East South Central, West South Central, East North Central, West North Central, Mountain, and Pacific. Data for all divisions, as well as the 50 states, are available in the Regional and State Employment and Unemployment release [www.bls.gov/lau/home.htm#news](http://www.bls.gov/lau/home.htm#news) issued monthly by BLS, while national statistics are highlighted in the Employment Situation [www.bls.gov/cps/home.htm#news](http://www.bls.gov/cps/home.htm#news).

Labor force and unemployment data for prior years reflect adjustments made at the end of each year. The adjusted estimates reflect updated population data from the U.S. Census Bureau, any revisions in the other data sources, and model reestimation. In most years, historical data for the most recent five years (both seasonally adjusted and not seasonally adjusted) are revised near the beginning of each calendar year, prior to or coincident with the release of January estimates.

This information will be made available to sensory impaired individuals upon request. Voice phone: (617) 565-2072, Federal Relay Services: 1-800-877-8339.

**Table 1. Labor force status for the U.S., New England, and New England states, seasonally adjusted**

| (Numbers in thousands) |          |           |          |          |          |          |          |          |          |          |           |
|------------------------|----------|-----------|----------|----------|----------|----------|----------|----------|----------|----------|-----------|
| Area                   | Aug 2010 | Sept 2010 | Oct 2010 | Nov 2010 | Dec 2010 | Jan 2011 | Feb 2011 | Mar 2011 | Apr 2011 | May 2011 | June 2011 |
| <b>Connecticut</b>     |          |           |          |          |          |          |          |          |          |          |           |
| Civilian labor force   | 1,896.6  | 1,896.7   | 1,896.8  | 1,896.7  | 1,896.6  | 1,896.6  | 1,896.8  | 1,898.2  | 1,898.6  | 1,894.1  | 1,886.2   |
| Employed               | 1,723.4  | 1,723.7   | 1,724.3  | 1,724.8  | 1,725.2  | 1,725.6  | 1,725.4  | 1,726.2  | 1,726.2  | 1,721.5  | 1,714.5   |
| Unemployed             | 173.2    | 173.0     | 172.5    | 172.0    | 171.4    | 170.9    | 171.4    | 172.0    | 172.4    | 172.6    | 171.6     |
| Unemployment rate      | 9.1      | 9.1       | 9.1      | 9.1      | 9.0      | 9.0      | 9.0      | 9.1      | 9.1      | 9.1      | 9.1       |
| <b>Maine</b>           |          |           |          |          |          |          |          |          |          |          |           |
| Civilian labor force   | 695.3    | 695.9     | 696.8    | 697.7    | 698.5    | 698.9    | 698.8    | 698.2    | 700.0    | 699.7    | 697.5     |
| Employed               | 641.7    | 642.8     | 644.0    | 645.1    | 646.0    | 646.4    | 646.4    | 645.4    | 647.1    | 645.9    | 643.4     |
| Unemployed             | 53.6     | 53.2      | 52.8     | 52.6     | 52.5     | 52.4     | 52.4     | 52.8     | 52.9     | 53.8     | 54.1      |
| Unemployment rate      | 7.7      | 7.6       | 7.6      | 7.5      | 7.5      | 7.5      | 7.5      | 7.6      | 7.6      | 7.7      | 7.8       |
| <b>Massachusetts</b>   |          |           |          |          |          |          |          |          |          |          |           |
| Civilian labor force   | 3,492.1  | 3,493.8   | 3,496.0  | 3,498.0  | 3,499.9  | 3,502.1  | 3,501.4  | 3,503.3  | 3,505.4  | 3,497.3  | 3,487.5   |
| Employed               | 3,200.0  | 3,202.1   | 3,204.5  | 3,206.5  | 3,208.3  | 3,211.3  | 3,213.3  | 3,221.5  | 3,233.2  | 3,231.8  | 3,223.9   |
| Unemployed             | 292.1    | 291.7     | 291.5    | 291.5    | 291.7    | 290.8    | 288.1    | 281.7    | 272.2    | 265.5    | 263.7     |
| Unemployment rate      | 8.4      | 8.3       | 8.3      | 8.3      | 8.3      | 8.3      | 8.2      | 8.0      | 7.8      | 7.6      | 7.6       |

| <b>(Numbers in thousands)</b>       |         |         |         |         |         |                        |         |         |         |         |         |
|-------------------------------------|---------|---------|---------|---------|---------|------------------------|---------|---------|---------|---------|---------|
| <b>New Hampshire</b>                |         |         |         |         |         |                        |         |         |         |         |         |
| <b>Civilian labor force</b>         | 742.6   | 742.8   | 743.1   | 743.4   | 743.7   | 744.2                  | 745.0   | 744.4   | 744.1   | 742.2   | 741.0   |
| <b>Employed</b>                     | 699.3   | 700.0   | 700.7   | 701.4   | 701.9   | 702.8                  | 704.4   | 706.0   | 707.9   | 706.5   | 704.4   |
| <b>Unemployed</b>                   | 43.3    | 42.8    | 42.4    | 42.0    | 41.8    | 41.4                   | 40.6    | 38.4    | 36.2    | 35.7    | 36.6    |
| <b>Unemployment rate</b>            | 5.8     | 5.8     | 5.7     | 5.7     | 5.6     | 5.6                    | 5.4     | 5.2     | 4.9     | 4.8     | 4.9     |
| <b>Rhode Island</b>                 |         |         |         |         |         |                        |         |         |         |         |         |
| <b>Civilian labor force</b>         | 576.5   | 576.7   | 576.9   | 577.1   | 577.3   | 576.2                  | 573.8   | 572.0   | 571.1   | 569.7   | 567.3   |
| <b>Employed</b>                     | 509.9   | 510.3   | 510.6   | 510.8   | 511.1   | 511.1                  | 509.8   | 508.9   | 509.1   | 507.7   | 505.9   |
| <b>Unemployed</b>                   | 66.6    | 66.4    | 66.3    | 66.2    | 66.2    | 65.1                   | 64.1    | 63.0    | 62.1    | 62.0    | 61.3    |
| <b>Unemployment rate</b>            | 11.5    | 11.5    | 11.5    | 11.5    | 11.5    | 11.3                   | 11.2    | 11.0    | 10.9    | 10.9    | 10.8    |
| <b>Vermont</b>                      |         |         |         |         |         |                        |         |         |         |         |         |
| <b>Civilian labor force</b>         | 360.0   | 360.1   | 360.4   | 360.8   | 361.2   | 362.5                  | 363.7   | 364.5   | 364.1   | 363.1   | 361.4   |
| <b>Employed</b>                     | 338.4   | 338.8   | 339.3   | 339.8   | 340.2   | 341.8                  | 343.3   | 344.7   | 344.7   | 343.5   | 341.5   |
| <b>Unemployed</b>                   | 21.6    | 21.3    | 21.2    | 21.0    | 21.0    | 20.8                   | 20.3    | 19.8    | 19.4    | 19.5    | 19.9    |
| <b>Unemployment rate</b>            | 6.0     | 5.9     | 5.9     | 5.8     | 5.8     | 5.7                    | 5.6     | 5.4     | 5.3     | 5.4     | 5.5     |
| <b>New England</b>                  |         |         |         |         |         |                        |         |         |         |         |         |
| <b>Civilian labor force</b>         | 7,758.5 | 7,762.1 | 7,767.4 | 7,772.2 | 7,777.6 | 7,782.4                | 7,784.1 | 7,786.0 | 7,787.0 | 7,768.9 | 7,739.2 |
| <b>Employed</b>                     | 7,108.3 | 7,114.2 | 7,121.7 | 7,128.4 | 7,135.0 | 7,144.1                | 7,149.0 | 7,157.4 | 7,170.4 | 7,158.2 | 7,132.4 |
| <b>Unemployed</b>                   | 650.2   | 647.9   | 645.7   | 643.8   | 642.6   | 638.3                  | 635.1   | 628.6   | 616.7   | 610.8   | 606.8   |
| <b>Unemployment rate</b>            | 8.4     | 8.3     | 8.3     | 8.3     | 8.3     | 8.2                    | 8.2     | 8.1     | 7.9     | 7.9     | 7.8     |
| <b>United States <sup>(1)</sup></b> |         |         |         |         |         |                        |         |         |         |         |         |
| <b>Civilian labor force</b>         | 154,117 | 154,124 | 153,960 | 153,950 | 153,690 | <sup>(2)</sup> 153,186 | 153,246 | 153,406 | 153,421 | 153,693 | 153,421 |
| <b>Employed</b>                     | 139,267 | 139,378 | 139,084 | 138,909 | 139,206 | <sup>(2)</sup> 139,323 | 139,573 | 139,864 | 139,674 | 139,779 | 139,334 |
| <b>Unemployed</b>                   | 14,849  | 14,746  | 14,876  | 15,041  | 14,485  | 13,863                 | 13,673  | 13,542  | 13,747  | 13,914  | 14,087  |
| <b>Unemployment rate</b>            | 9.6     | 9.6     | 9.7     | 9.8     | 9.4     | 9.0                    | 8.9     | 8.8     | 9.0     | 9.1     | 9.2     |

## Footnotes

(1) Data for the U.S. are obtained directly from the national Current Population Survey (CPS) and are not preliminary. Seasonal data have been revised as a result of routine seasonal updates processed at the end of each calendar year.

(2) Data affected by changes in population controls.

(P) Preliminary

NOTE: Data refer to place of residence. Area definitions are based on Office of Management and Budget Bulletin No. 10-02, dated 2009, and are available at [www.bls.gov/lau.lausmsa.htm](http://www.bls.gov/lau.lausmsa.htm). Estimates for the latest month are subject to revision the following month.  
NOTE: Data in this series reflect revised population controls, model reestimation, and new seasonal factors from January 2006 to 2010.

U.S. Bureau of Labor Statistics | New England Information Office, JFK Federal Building Suite E-310, Boston, MA 02203

[www.bls.gov/ro1](http://www.bls.gov/ro1) | Telephone: 1-617-565-2327 | [Contact New England Region \(R01\)](#)